
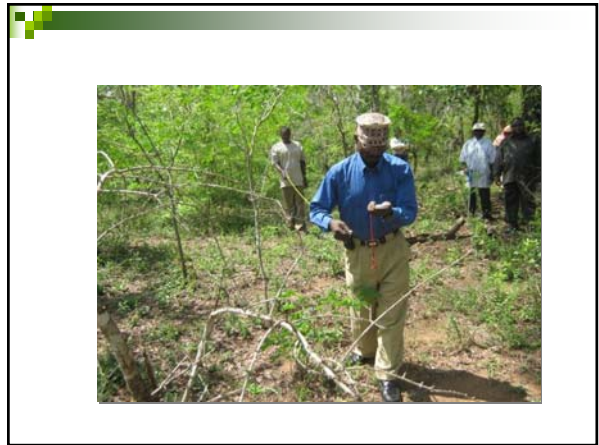
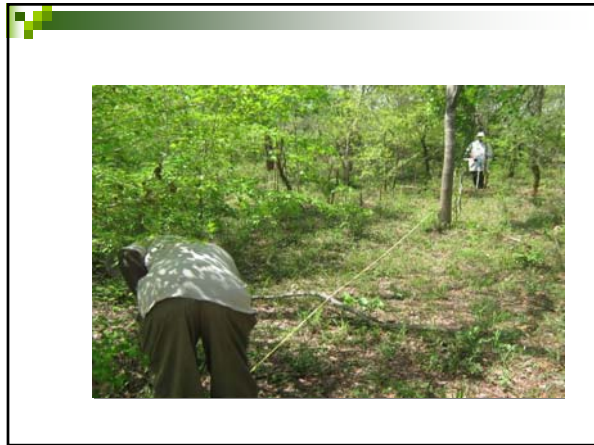


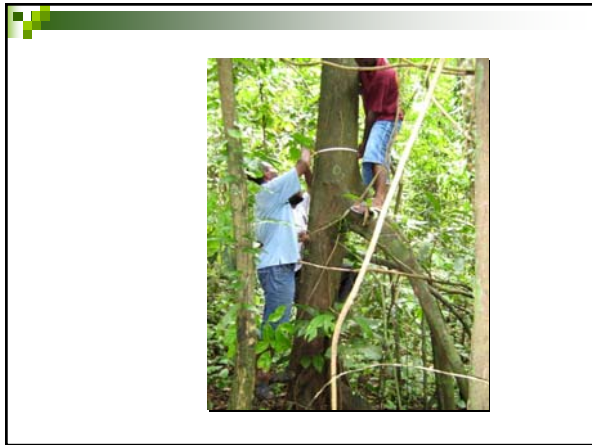
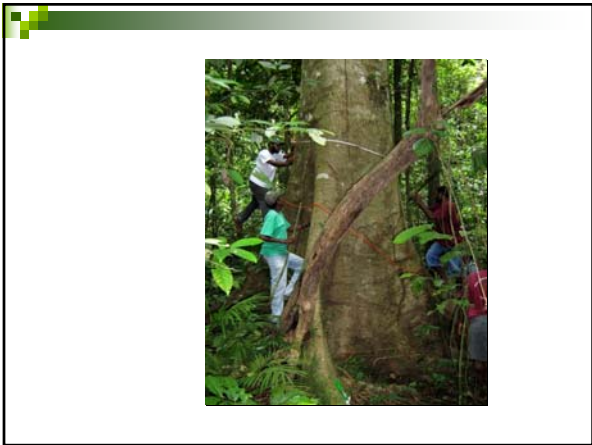
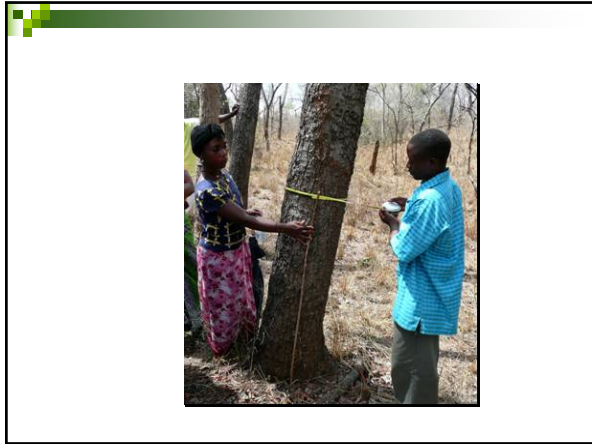
KTGAL methods

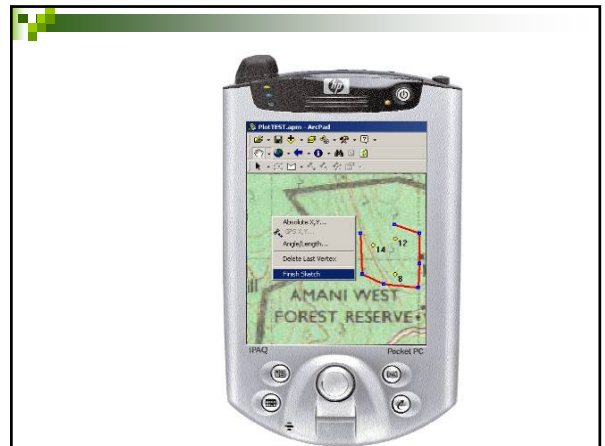
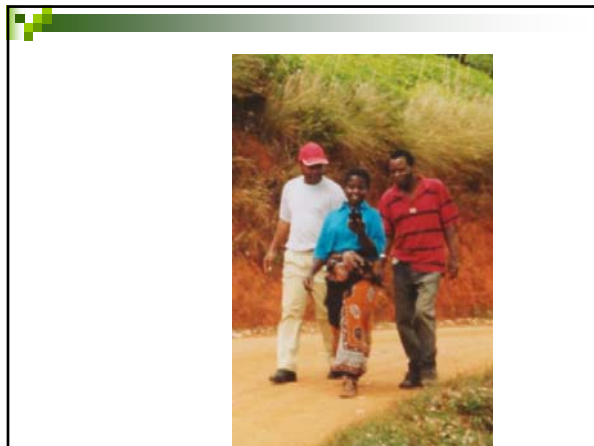
Margaret Skutsch (CIGA-UNAM)



Measuring trees







Field Guide

Fig. 4: Activate data layers

Fig. 7: Activating the GPS

Fig. 9: GPS signal Alerts

Fig. 12: Example data collection form

UTM Zone 38Q
355545E
9247545N

The red dot indicates the direction to take.

DST → distance to next point
Task is to move in such direction that the large black arrow points in the direction of the red dot.

Fig. 10: Using the Go To function; GPS indicator

Traveling between point 1 and point 2 can be done using the Go To function.

The GPS will give bearing and distance to the next point.

Fig. 13: Using the Go To function; Map indicator